

Paint

Exterior

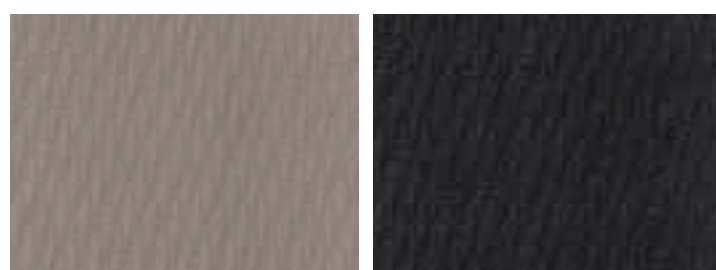


Satin White Pearl Steel Silver Metallic Harvest Gold Metallic Sky Blue Metallic¹

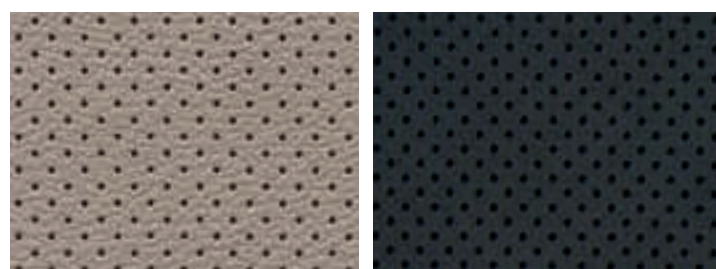


Azurite Blue Pearl Ruby Red Pearl Graphite Gray Metallic Crystal Black Silica

Upholstery



Warm Ivory Cloth (WIC) Off-Black Cloth (OBC)



Warm Ivory Leather (WIL) Off-Black Leather (OBL)

Legacy Color Combinations

PAINT	2.5i – 2.5i Premium 2.5GT Premium – 3.6R – 3.6R Premium		2.5i Limited – 2.5GT Limited 3.6R Limited	
	WIC	OBC	WIL	OBL
Satin White Pearl	WIC		WIL	
Steel Silver Metallic	OBC		OBL	
Harvest Gold Metallic	WIC		WIL	
Sky Blue Metallic ¹	OBC		OBL	
Azurite Blue Pearl	WIC		WIL	
Ruby Red Pearl	OBC		OBL	
Graphite Gray Metallic	OBC		OBL	
Crystal Black Silica	WIC		WIL	

Legacy® Specifications

ENGINE AND DRIVETRAIN	2.5i, 2.5i Premium and 2.5i Limited		2.5GT Premium and 2.5GT Limited		3.6R, 3.6R Premium and 3.6R Limited			
Engine	2.5-liter SOHC aluminum-alloy 16-valve horizontally opposed 4-cylinder SUBARU BOXER® engine with i-Active Valve Lift System.		2.5-liter DOHC intercooled, turbocharged aluminum-alloy 16-valve 4-cylinder horizontally opposed SUBARU BOXER engine with Active Valve Control System.		3.6-liter DOHC aluminum-alloy 24-valve 6-cylinder horizontally opposed SUBARU BOXER engine with Dual Active Valve Control System.			
Power	170 hp @ 5,600 rpm		265 hp @ 6,000 rpm		256 hp @ 6,600 rpm			
Torque	170 lb-ft @ 4,000 rpm		258 lb-ft @ 2,000–5,200 rpm		247 lb-ft @ 4,400 rpm			
Manual transmission	Fully synchronized 6-speed manual. 2.5i and 2.5i Premium: Standard. 2.5i Limited: N/A.		Standard fully synchronized 6-speed manual		Not available			
Automatic transmission	Lineartronic™ CVT (Continuously Variable Transmission) with 6-speed manual mode and paddle shifters. 2.5i and 2.5i Premium: Optional. 2.5i Limited: Standard.		Not available		Standard 5-speed adaptive electronic SPORTSHIFT automatic with downshift rev-matching control			
CA Emissions	SULEV (PZEV) ¹ and LEV2		LEV2		LEV2/ULEV			
FUEL								
Fuel economy (city/highway) ²	Manual: 22/29 mpg CVT: 23/30 mpg		17/23 mpg		17/23 mpg			
Fuel requirement	Unleaded gasoline (87 octane)		Premium unleaded gasoline required (93 octane)		Unleaded gasoline (87 octane)			
SYMMETRICAL ALL-WHEEL DRIVE								
Continuous All-Wheel Drive	Models equipped with 6-speed manual transmissions utilize a viscous-type locking center differential with torque distribution normally configured at a 50/50-split front-to-rear. If wheel speed differs between front and rear axles, the system helps distribute power to the wheels with the most traction.							
Active All-Wheel Drive	Models equipped with Lineartronic™ CVT utilize an electronically controlled variable transfer clutch to distribute power to where traction is needed. Sensors monitor parameters such as wheel slippage, throttle position and braking, to help determine torque distribution and direct it to the wheels with optimum traction.							
Variable Torque Distribution (VTD) All-Wheel Drive	Models equipped with 5-speed automatic transmission utilize an electronically controlled variable transfer clutch in conjunction with a planetary-type center differential and a viscous-type limited-slip rear differential. Torque distribution is normally configured at a performance-oriented rear-wheel-biased 45/55-split front-to-rear. Sensors monitor parameters such as wheel slippage, throttle position and braking to help determine torque distribution and direct it to the wheels with optimum traction.							
STABILITY AND TRACTION								
Vehicle Dynamics Control (VDC)	VDC electronic stability control utilizes sensors which constantly monitor wheel speeds, steering angle, brake pressure, vehicle yaw rate and lateral g-forces. If VDC detects a difference between the driver's intended path and the one the vehicle is actually taking, VDC applies braking power and/or reduces engine torque to help correct vehicle path.							
Traction Control System (TCS)	VDC also incorporates an all-wheel, all-speed traction control system which senses a loss of traction and applies braking force to the slipping wheel or wheels as necessary to maintain vehicle motion.							
CHASSIS								
Steering	Quick ratio engine-speed-sensing variable power-assisted rack-and-pinion. Turning circle: 36.8 feet.							
Suspension	4-wheel independent. Front: MacPherson strut type. Rear: Double-wishbone. Front and rear stabilizer bars.							
Brakes	4-wheel disc. 2.5i models: ventilated front. 2.5GT and 3.6R models: ventilated front and rear. 4-channel, 4-sensor ABS with Electronic Brake-force Distribution (EBD).							
Brake discs (front/rear)	11.6 inches/11.3 inches		12.4 inches/11.4 inches					
Brake Assist	When emergency braking is detected by how quickly the brake pedal is pressed, maximum brake pressure is immediately applied.							
WHEELS AND TIRES								
Wheels	2.5i: 16 x 6.5-inch steel with covers. 2.5i Premium: 16 x 6.5-inch 8-spoke aluminum-alloy. 2.5i Limited: 17 x 7.0-inch 10-spoke aluminum-alloy.		18 x 7.0-inch 15-spoke aluminum-alloy.		17 x 7.0-inch 10-spoke aluminum-alloy.			
Tires	2.5i and 2.5i Premium: 205/60 R16 91V all-season 2.5i Limited: 215/50 R17 90V all-season		215/45 R18 91W summer performance		225/50 R17 93V all-season			
EXTERIOR DIMENSIONS								
Length/Width/Height	186.4 inches/71.7 inches/59.3 inches							
Wheelbase	108.3 inches							
Track (front/rear)	61.6 inches/61.8 inches							
Base curb weight (manual/automatic)	2.5i: 3,270 lbs/ 3,379 lbs	2.5i Premium: 3,275 lbs/ 3,384 lbs	2.5i Limited: N/A/3,451 lbs	2.5GT Premium: 3,440 lbs/N/A	2.5GT Limited: 3,477 lbs/N/A	3.6R: N/A/3,481 lbs	3.6R Premium: N/A/3,518 lbs	3.6R Limited: N/A/3,557 lbs
INTERIOR DIMENSIONS								
Headroom (front/rear)	40.3 inches/37.5 inches (with available moonroof: 38.1 inches/37.5 inches)							
Legroom (front/rear)	43.0 inches/37.8 inches							
Shoulder room (front/rear)	56.3 inches/56.1 inches							
Passenger volume	103.0 cubic feet (with available moonroof: 100.0 cubic feet)							
Cargo volume	14.7 cubic feet							

¹ Availability delayed until Fall 2009.

Legacy® Equipment

EXTERIOR	2.5i	2.5i Premium	2.5i Limited	2.5GT Premium	2.5GT Limited	3.6R	3.6R Premium	3.6R Limited
Projector-beam low-beam (with Auto-on) and multireflector high-beam headlights	●	●	●	●	●	●	●	●
Functional hood scoop (feeds turbocharger intercooler)	-	-	-	●	●	-	-	-
Black side mirrors	●	-	-	-	-	-	-	-
Body-color side mirrors	-	●	●	●	●	●	●	●
Body-color door handles	●	●	●	●	●	●	●	●
Heated side mirrors and windshield wiper de-icer	-	○ ³	●	●	●	-	●	●
Two-speed windshield wipers with variable intermittent mode	●	●	●	●	●	●	●	●
Aerodynamic side ground effects	●	●	●	●	●	●	●	●
Single chrome exhaust outlet	-	●	●	-	-	-	-	-
Dual chrome exhaust outlets	-	-	-	●	●	●	●	●

SEATING AND TRIM

6-way manually adjustable driver's seat. 4-way manually adjustable front-passenger's seat.	●	-	-	-	-	●	-	-
10-way power driver's seat with power adjustable lumbar support. 4-way manually adjustable front-passenger's seat.	-	●	-	●	-	-	●	-
10-way power driver's seat with power adjustable lumbar support. 4-way power front-passenger's seat.	-	-	●	-	●	-	-	●
Heated front seats	-	○	●	●	●	-	●	●
60/40-split flat-folding rear seatback	●	●	●	●	●	●	●	●
Leather-wrapped manual transmission shifter handle	-	-	-	●	●	-	-	-
Cloth upholstery	●	●	-	●	-	●	●	-
Leather-trimmed upholstery	-	-	●	-	●	-	-	●
Silver metallic trim on doors and console	●	●	-	●	-	●	●	-
Woodgrain-patterned accent trim on doors and console	-	-	●	-	●	-	-	●

CONVENIENCE FEATURES

Electronic parking brake with hill-holder function	●	●	●	●	●	●	●	●
Driver's auto up/down power window	-	●	●	●	●	●	●	●
Electronic cruise control	●	●	●	●	●	●	●	●
Integrated key fob with lock, unlock and panic functions	●	●	●	●	●	●	●	●
3-spoke steering wheel with audio system and cruise control buttons	●	-	-	-	-	●	-	-
Leather-wrapped 3-spoke steering wheel with audio system, cruise control and (if equipped) Bluetooth® wireless phone on/off, navigation system voice-command buttons	-	●	●	●	●	-	●	●
Automatic SPORTSHIFT® or Lineartronic™ CVT transmission paddle shifters	○	○	●	-	-	●	●	●
Manually adjustable tilt/telescoping steering column	●	●	●	●	●	●	●	●
8 cup holders	●	●	●	●	●	●	●	●
Sun visors with extenders and illuminated vanity mirrors	●	●	●	●	●	●	●	●
Center console with two 12-volt power outlets and enclosed storage compartment	●	●	●	●	●	●	●	●
Overhead console with dual maplights and sunglasses storage	●	●	●	●	●	●	●	●

AUDIO AND COMMUNICATION SYSTEMS

4-speaker audio system with CS audio enhancement and MP3/WMA/AAC playback capability	●	●	-	●	-	●	●	-
440-watt 9-speaker harman/kardon® premium audio system with amplifier, subwoofer, MP3/WMA playback capability and Bluetooth wireless phone capability	-	○	●	○	●	-	○	●
Single-disc in-dash CD player	●	●	-	●	-	●	●	-
6-disc in-dash CD changer	-	○	●	○	●	-	○	●
Auxiliary audio jack for portable media players	●	●	●	●	●	●	●	●
XM® or SIRIUS® Satellite Radio capability ⁴	●	●	●	●	●	●	●	●

INSTRUMENTATION

Analog speedometer, tachometer, "eco" fuel economy and fuel level gauges	●	●	●	●	●	●	●	●
Digital trip computer displaying fuel economy, digital clock and ambient temperature	●	●	●	●	●	●	●	●
Manual or automatic/CVT transmission (if equipped) shift-position indicator	●	●	●	●	●	●	●	●

CLIMATE CONTROL

Manually adjustable CFC-free air-conditioning system with rotary controls for temperature, 4-speed fan and airflow direction	●	●	-	●	-	●	●	-
Dual-zone automatic digital climate control system with controls for temperature, 6-speed fan, airflow direction, dual-zone lockout and CFC-free air conditioning	-	-	●	-	●	-	-	●

SECURITY	2.5i	2.5i Premium	2.5i Limited	2.5GT Premium	2.5GT Limited	3.6R	3.6R Premium	3.6R Limited
Keyless entry system with trunk release and answer-back electronic chirp	●	●	●	●	●	●	●	●
Antitheft security system with engine immobilizer	●	●	●	●	●	●	●	●

SAFETY

ACTIVE								
Subaru Symmetrical All-Wheel Drive (AWD)	●	●	●	●	●	●	●	●
SUBARU BOXER engine	●	●	●	●	●	●	●	●
4-wheel antilock brakes (ABS) with Electronic Brake-force Distribution (EBD)	●	●	●	●	●	●	●	●
Brake Assist	●	●	●	●	●	●	●	●
Vehicle Dynamics Control (VDC)	●	●	●	●	●	●	●	●
Traction Control System (TCS)	●	●	●	●	●	●	●	●
Tire Pressure Monitoring System (TPMS)	●	●	●	●	●	●	●	●
Daytime Running Lights (DRL)	●	●	●	●	●	●	●	●

PASSIVE

Dual-stage deployment driver and front-passenger front airbags (SRS) ⁵	●	●	●	●	●	●	●	●
Subaru advanced frontal airbag system (SRS) ⁵	●	●	●	●	●	●	●	●
Side-curtain airbags protecting front and rear outboard occupants (SRS) ⁵	●	●	●	●	●	●	●	●
Seat-mounted front side-impact airbags (SRS) ⁵	●	●	●	●	●	●	●	●
Height-adjustable front seat head restraints	●	●	●	●	●	●	●	●
Three individual rear head restraints	●	●	●	●	●	●	●	●
Height-adjustable 3-point front seatbelts with pretensioners and force limiters. 3-point rear seatbelts at all seating positions.	●	●	●	●	●	●	●	●
Rear child-safety door locks	●	●	●	●	●	●	●	●
LATCH system: Lower Anchors and Tethers for Children	●	●	●	●	●	●	●	●
Safety brake pedal system	●	●	●	●	●	●	●	●
Energy-absorbing collapsible steering column	●	●	●	●	●	●	●	●
Ring-shaped Reinforcement Frame body structure	●	●	●	●	●	●	●	●

OPTIONAL EQUIPMENT

Lineartronic™ CVT (Continuously Variable Transmission)	○	○	●	-	-	-	-	-
Power tilt/sliding-glass moonroof	-	○	○	○	○	-	○	○
440-watt 9-speaker harman/kardon® premium audio system with 6-disc in-dash CD changer, amplifier, subwoofer, MP3/WMA playback capability and Bluetooth® wireless phone capability	-	○	●	○	●	-	○	●
Voice-activated 8-inch high-resolution touch-screen GPS navigation system ⁵ and single-disc CD/DVD ⁷ player with Bluetooth wireless phone and streaming audio capability, MP3/WMA playback capability and USB/iPod® auxiliary audio port (with iPod® control)	-	-	○	-	○	-	-	○
All-Weather Package: Windshield wiper de-icer, heated side mirrors and heated front seats	-	○	●	●	●	-	●	●

WARRANTIES

New Car Limited Warranty: 3 years or 36,000 miles, whichever comes first. **Powertrain Limited Warranty:** 5 years or 60,000 miles, whichever comes first. **Wear Item Limited Warranty:** 3 years or 36,000 miles, whichever comes first. Repairs to the following items will also be covered under Wear Item Limited Warranty: • Brake Pads • Wiper Blades • Clutch Linings • Transmitter Batteries **Rust Perforation Limited Warranty:** 5 years, unlimited mileage.

● Standard ○ Optional - Not available

¹ 2010 Subaru Legacy non-turbo 2.5-liter models achieving a Partial Zero Emission Vehicle (PZEV) rating by the California Air Resources Board are available in all 50 states. Only those registered in California, Connecticut, Maine, Massachusetts, New Hampshire, New York, Rhode Island and Vermont are eligible for the 15 years/150,000 miles emissions warranty. California PZEV-certified vehicles are considered the cleanest gasoline-powered vehicles because they meet California's most stringent tailpipe emissions standards for Super Ultra Low Emission Vehicles (SULEV). (Subaru offers other 2010 model emissions warranties for high-cost parts in only those states adopting the CA LEV Program.) ² Preliminary manufacturer estimates. EPA fuel economy estimates may vary. ³ Optional as part of All-Weather Package. See equipment listing above. ⁴ Available as an accessory. See your dealer. Satellite radio hardware and required monthly subscription sold separately. ⁵ The Supplemental Restraint System (SRS) affords the driver and the front passenger additional protection in moderate to severe frontal and side-impact collisions and outboard 2nd-row passengers additional protection in moderate to severe side-impact collisions. This system provides supplemental protection only, and seatbelts must be worn in order to avoid injuries to out-of-position occupants upon airbag deployment and to provide the best combined protection in a serious accident. Children should always be properly restrained in one of the rear seats. See Owner's Manual for recommended seating position. ⁶ Requires optional moonroof. ⁷ With vehicle stopped and parking brake engaged.

Some images shown are for illustration purposes only. Specifications in this brochure are based on the latest product information available at the time of publication. For the most up-to-date product information, log on to subaru.com. Some equipment shown in photography in this brochure is optional at extra cost. Specific options may be available only in combination with other options. Specific combinations of equipment or features may vary from time to time and by geographic area. Certain accessories and equipment may not be available at the time of publication. Subaru of America, Inc., reserves the right to change or discontinue at any time, without notice, prices, colors, materials, equipment, accessories, specifications, models and packages without incurring any obligation to make the same or similar changes on vehicles previously sold. Colors shown may vary due to reproduction and printing processes.

This brochure was prepared by Subaru of America, Inc. A warranty from Subaru of America, Inc., is available only on cars sold to the first retail purchaser through an authorized Subaru dealer in the continental U.S. or Alaska. Subaru, SUBARU BOXER, Added Security and Legacy are registered trademarks. Lineartronic is a trademark. SPORTSHIFT is a registered trademark of Prodrive Ltd. HomeLink is a registered trademark of Prince Corporation, a wholly owned subsidiary of Johnson Controls. harman/kardon is a registered trademark of Harman International Industries, Inc. MOMO is a registered trademark of Momo S.p.A. Corporation. SIRIUS is a registered trademark of Sirius Satellite Radio Inc. XM is a registered trademark of XM Satellite Radio Inc. iPod is a registered trademark of Apple Inc. SmartWay is a registered trademark of the U.S. Environmental Protection Agency. For more information, contact your Subaru dealer or log on to subaru.com.